

Marple Leisure & Community Hub

Public Engagement December 2020

December 2020



Project Number: 19018
Produced by: JAT
Checked by: SBL

Contents Page

- 1 • Introduction
- 2 • Prior Engagement
- 3 • The Options
- 4 • Ways to Engage

1 • Introduction

Introduction

We are developing plans for a Marple Leisure and Community hub that could replace the existing Marple Pool and Marple Library in a new purpose-built facility. We carried out some initial public engagement back in March to ask you what you would like to see in a new building and we have used this feedback to inform the work we've been doing since. We have been engaging with various specific groups over the last few months via online video presentations, questionnaires, and email discussions to understand their thoughts, requirements, and ideas for the hub. These groups include the Neighbourhood Forum, Civic Society, Friends of Marple Memorial Park, Senior Citizens' Association, Swimming Club, Libraries Service and Life Leisure. We are also running a dedicated youth survey targeted at young people in the area.

Marple Pool has been closed since 2018 for health and safety reasons and would not be able to reopen without significant investment. Consequently, there are no plans to reopen the pool. The gym facility at the site has been closed temporarily due to the Coronavirus pandemic and there are no plans to reopen this as the size of the gym will not allow for it to be operated cost effectively whilst social distancing restrictions are in place. Major roof works are required to prevent water ingress into the gym and it is not economically viable to make this investment when a replacement facility is being planned. Options are currently being investigated for alternative fitness provision in the area while we continue with the possible development of a Marple Leisure and Community Hub.

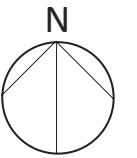
Ideally, we would have run face to face engagement events on the proposals but with the current restrictions and the need to consider everyone's safety this is not possible. When the situation allows, we will arrange this. Meanwhile, we want the project to keep moving forward and these display boards provide the latest information and show the current proposals we are considering; we would welcome

your feedback on them. The same information can be found on our website – details below.

The proposals seek to create a combined community hub building that provides a focal point for all community activities in the area. We have explored options that include other uses alongside the leisure and library facilities such as the Senior Citizens Centre (including the hall), youth facilities and the health centre. We would like to hear your thoughts, ideas and opinions on the options shown here, specifically the preferred location and mix of facilities. The ways in which you can provide your feedback are explained at the end of this document.

Location

We would look to locate the new hub on the site of the existing library to the North of Hollins House. We have explored other locations, including the existing pool site and other sites within the Park area, and this site has proved to be the most suitable in terms of being able to accommodate the proposed facilities, its proximity to other facilities and the town centre, and its impact on the park. Many of you asked why we are not using the site of the existing pool, but unfortunately this is not big enough to fit a new larger facility. Using the library site means the proposed hub would be positioned within Marple Memorial Park and could take advantage of the fantastic views whilst connecting to the park and all the outdoor and play activities available. The new development could include a café which would also serve the park.



Location Plan

2 • Prior Engagement

Prior Engagement

Prior Engagement Activity - Facility Mix

The most popular activities identified during our initial engagement activities are shown here.

What this means for the project:

The most popular activities chosen by you have been analysed and developed along with a ‘needs assessment’ for the project. This helps us to provide the community of Marple with the correct mix of facilities for their needs.

TOP 10 ACTIVITIES CHOSEN

ACTIVITY: SWIMMING	CATEGORY: SPORTS/LEISURE
ACTIVITY: FITNESS	CATEGORY: SPORTS/LEISURE
ACTIVITY: GROUP EXERCISE CLASSES	CATEGORY: SPORTS/LEISURE
ACTIVITY: MEETING/GATHERING	CATEGORY: COMMUNITY
ACTIVITY: BOOK LENDING	CATEGORY: ARTS/CULTURE
ACTIVITY: WELLNESS (YOGA/PILATES)	CATEGORY: HEALTH/WELLBEING
ACTIVITY: NURSERY/CRECHE	CATEGORY: COMMUNITY
ACTIVITY: RACQUET SPORTS	CATEGORY: SPORTS/LEISURE
ACTIVITY: ADVICE	CATEGORY: CIVIC
ACTIVITY: IT HUBS	CATEGORY: ARTS/CULTURE

TOP 10-20 ACTIVITIES CHOSEN

ACTIVITY: PUBLIC MEETINGS	CATEGORY: CIVIC
ACTIVITY: SOCIALS/CLUBS	CATEGORY: COMMUNITY
ACTIVITY: BOOK READINGS	CATEGORY: ARTS/CULTURE
ACTIVITY: SUPPORT GROUPS	CATEGORY: HEALTH/WELLBEING
ACTIVITY: COMMUNITY GARDENING	CATEGORY: OUTDOOR
ACTIVITY: OUTDOOR SPORTS	CATEGORY: OUTDOOR
ACTIVITY: MEDICAL/GP SERVICES	CATEGORY: HEALTH/WELLBEING
ACTIVITY: STORAGE	CATEGORY: COMMUNITY
ACTIVITY: ADULT EDUCATION	CATEGORY: COMMUNITY
ACTIVITY: EXHIBITION/GALLERIES	CATEGORY: ARTS/CULTURE

3 • The Options

Key Themes

These are design concepts that are important to the aspirations of the project. They create the main objectives which inform our designs.



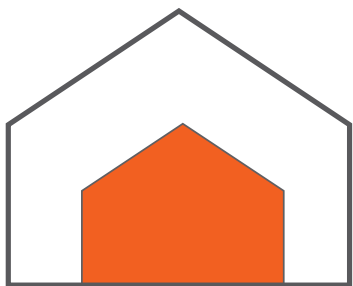
STRENGTHENING A COMMUNITY HEART

Connecting the new centre to the wide variety of existing community and leisure uses nearby to strengthen and provide a focus for the established community spirit



INCREASING PARTICIPATION INCLUSIVELY

Encouraging more members of the community to take part in activities - both physical and community based whilst ensuring that these activities are inclusive to all.

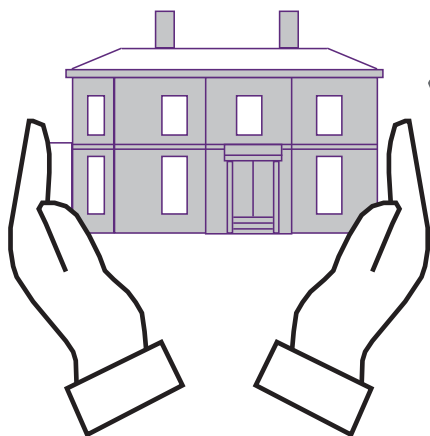


BIG OFFER ON A COMMUNITY SCALE

Creating a flexible development that offers a wide range of uses through making spaces work hard whilst maintaining a community scale and public feel.



We have included a heritage aspect into the key themes of the project following feedback from key stakeholders at recent engagement workshops



EMBEDDING HERITAGE

Celebrating the Heritage of Marple and the Park in the new development through considered interpretation and exhibition.

The Options

We currently have 3 potential options which are explained in more detail to the right. The first option is our 'Core Brief' which would provide replacement library and leisure facilities. The second and third options then include additional facilities to enhance the core brief grouped into 'Community' and 'Health'. Both of these options would allow existing buildings on the site to be removed. At the moment we are not looking to include facilities for the Scouts or Police in our proposals, although discussions with those organisations are continuing.



Option 1- Core Brief

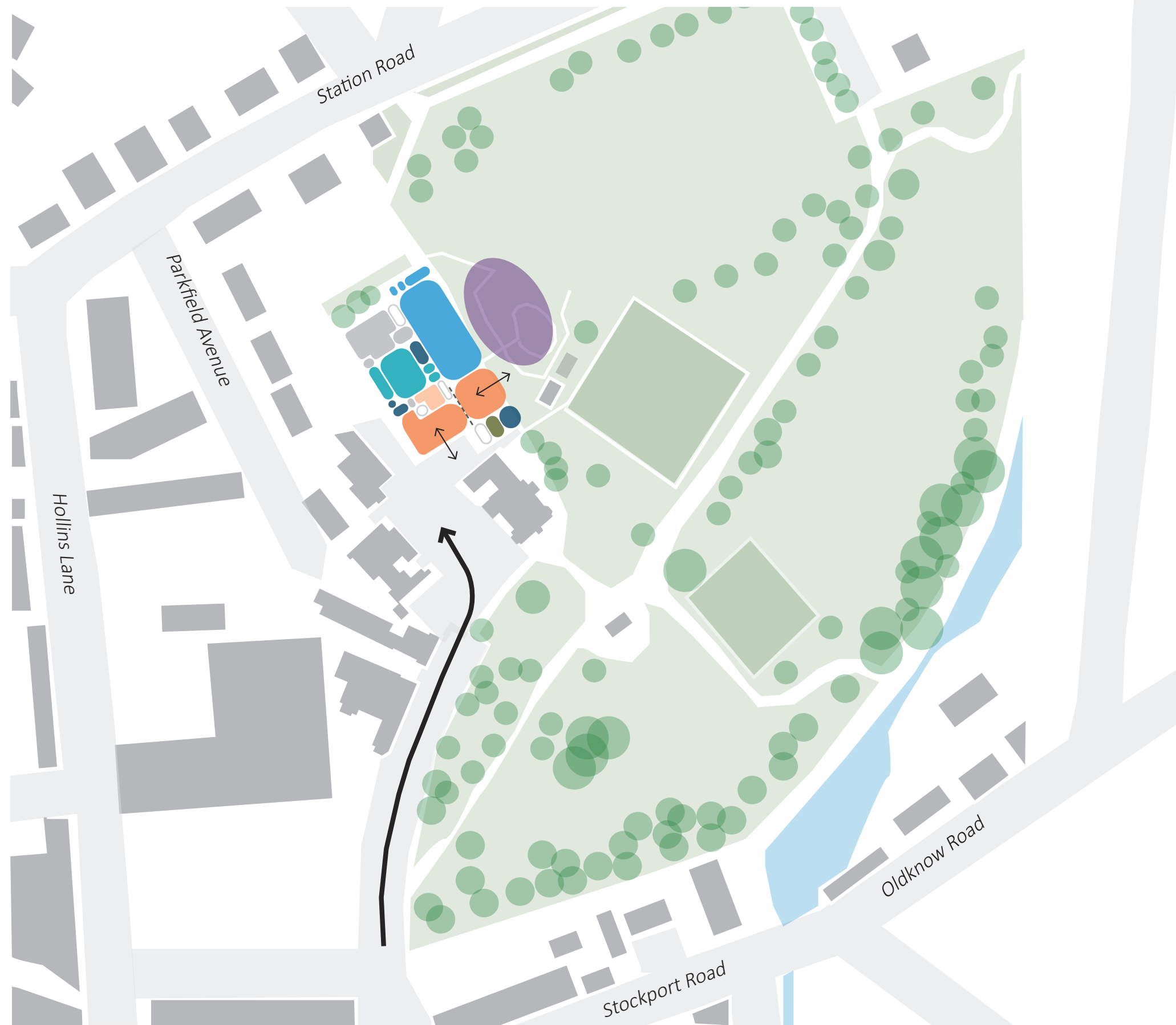
We are calling this option the ‘Core Brief’ as this would provide replacement library and leisure facilities - the ‘core’ of the project. The Core Brief includes the removal of the existing library building and the provision of library facilities and community rooms in the new building. It also includes a swimming pool and fitness suite to replace the existing swimming pool in Marple. The second and third options then explore additional facilities to enhance the core brief grouped into ‘Community’ and ‘Health’.

Option 1 - Core Brief Facilities

- 4 Lane Pool with small Splash Pad
- Small sauna and steam room
- 60 Station Fitness Suite
- Studios
- Cafe
- Library
- Community Rooms
- Improved Outdoor Play Park

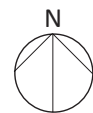
Option 1 - Location Plan

- Footprint of new building means that some of the woodland area to the north of the site will have to be removed
- Access into site to remain as existing
- All buildings around site (Healthcare, Senior Citizen's Association, Scout Hut, Police building) to remain.

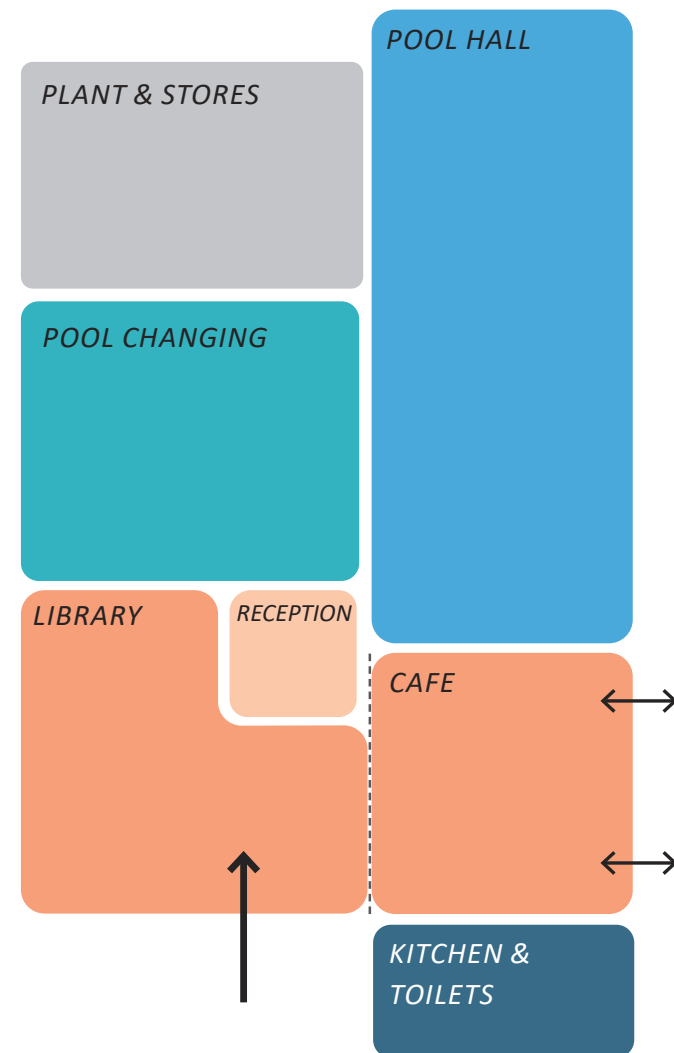


Key

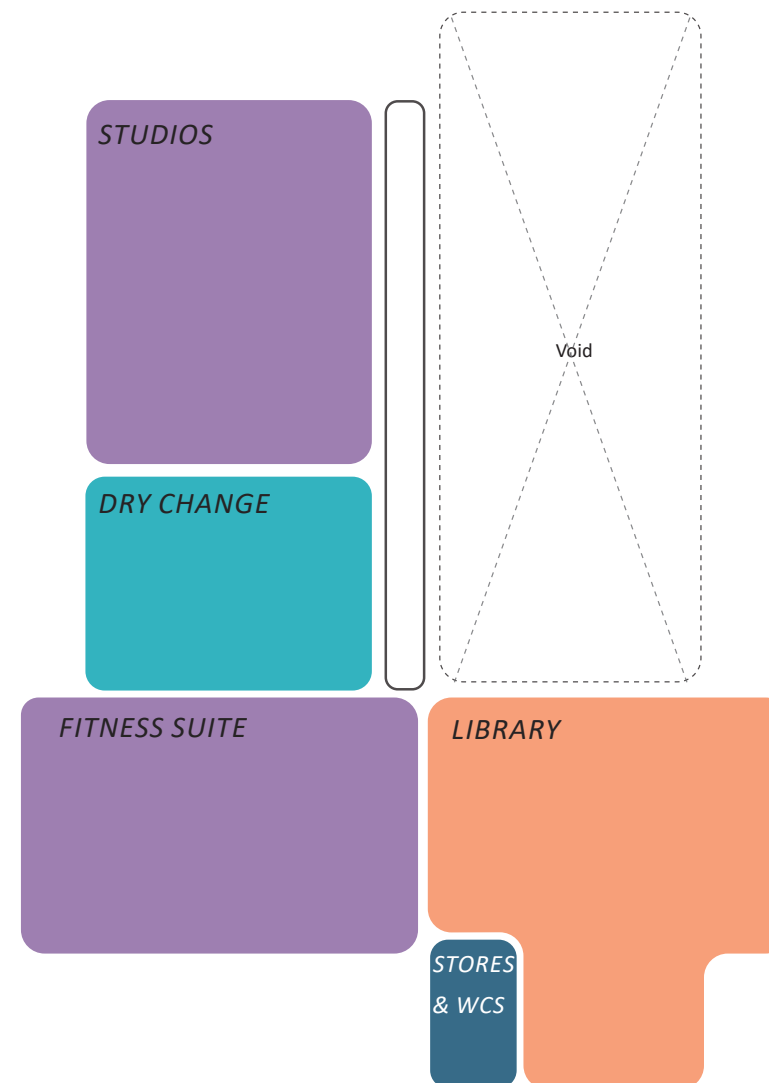
➔ Main vehicular access route



Option 1 - Coloured Plans



Ground Floor



First Floor

This option means that only the existing library building is to be removed. All other buildings on the site will remain as they are currently.

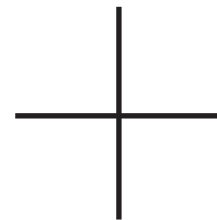


Mezzanine

Option 2 - Enhanced Community Brief

Option 1 - Core Brief Facilities

4 Lane Pool with small Splash Pad
Small sauna and steam room
60 Station Fitness Suite
Studios
Cafe
Library
Community Rooms
Improved Outdoor Play Park

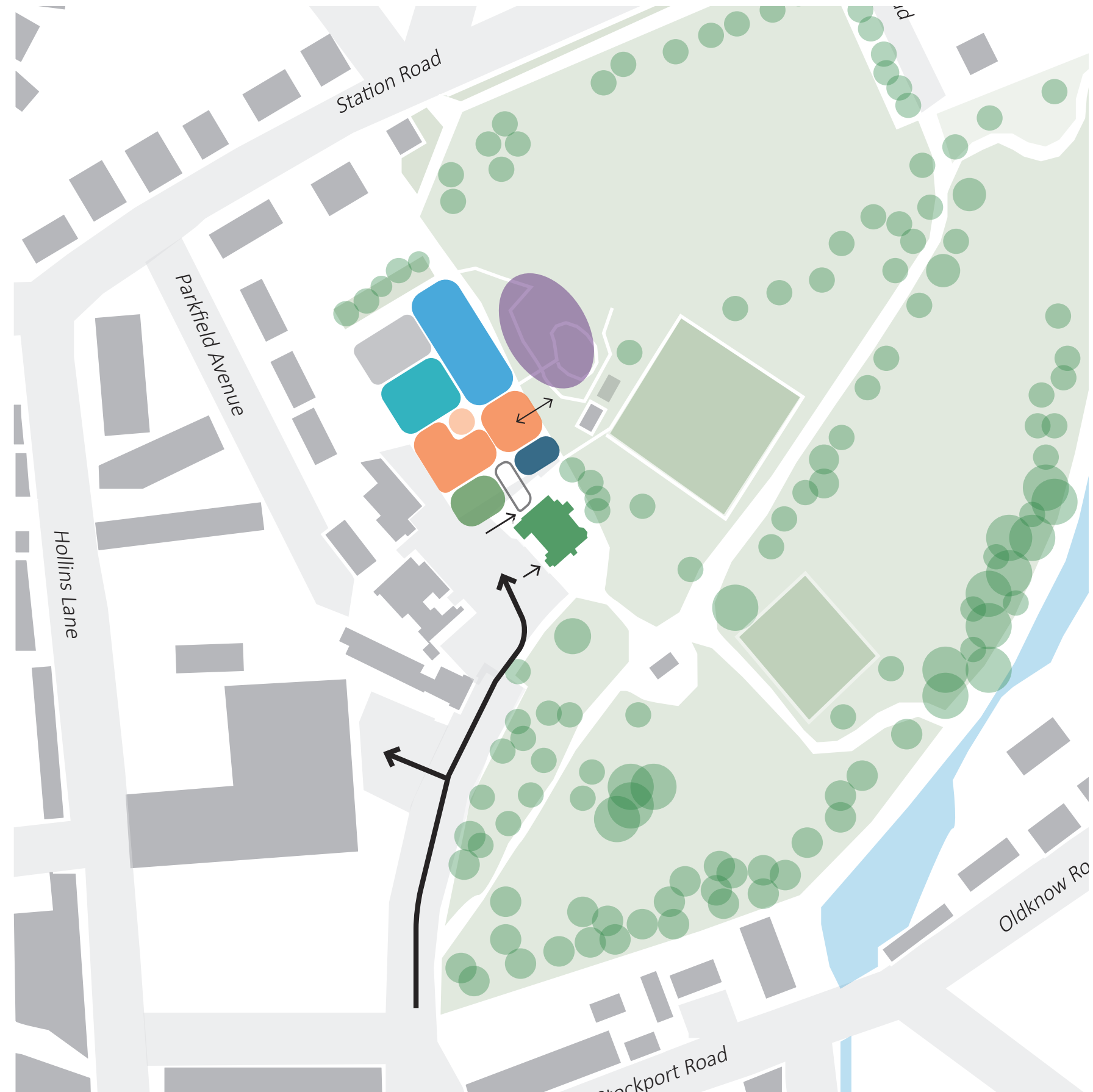


Option 2 - Enhanced Community Option Facilities

New Senior Citizen Association Facilities
including dedicated entrance
Community Hall
Youth Facilities

Option 2 - Location Plan

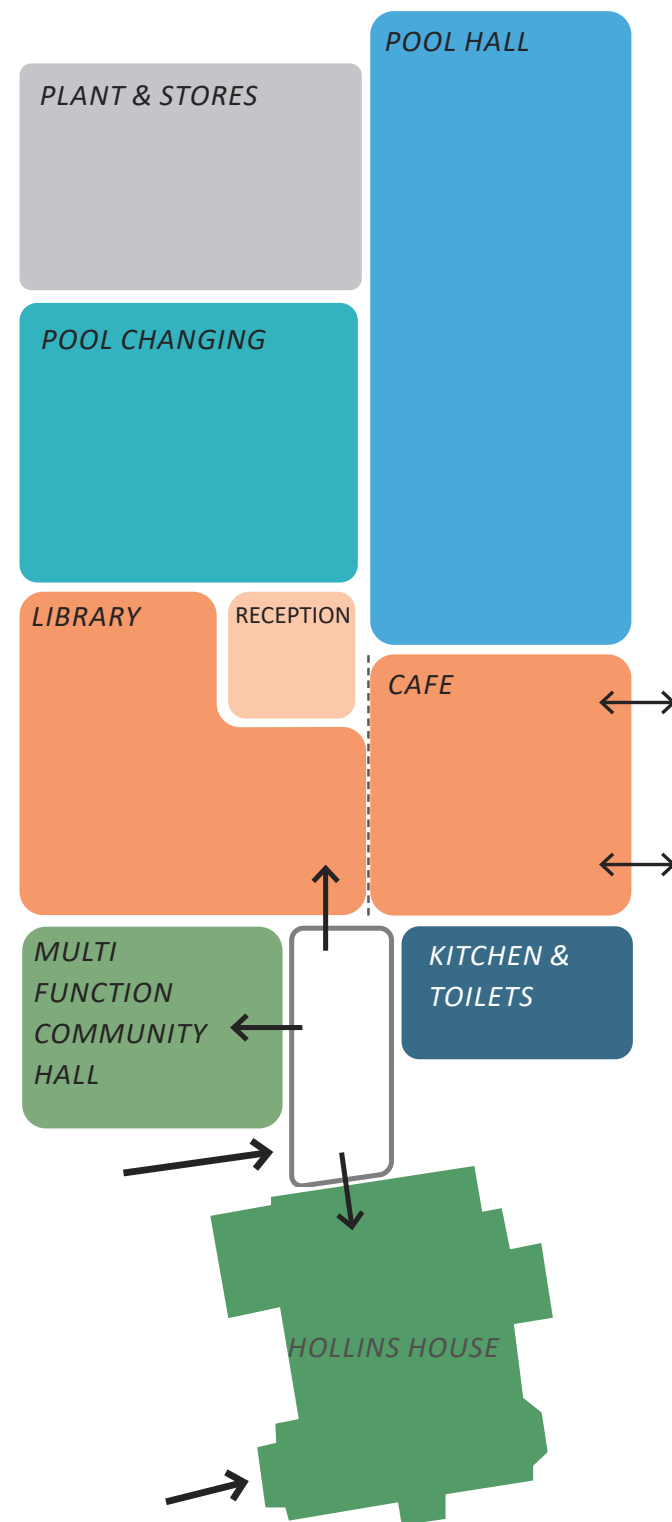
- Refurbished Hollins House as a community centre, housing the Senior Citizen Association lounge and community rooms
- Current Hollins House extension removed
- Shared entrance that connects the two community buildings.
- By linking these two buildings the footprint is able to move enough to save some of the wood land area to the north
- Existing Senior Citizen Association building removed to allow for overspill car parking
- Access to the Community Hub would be via the existing road into the park



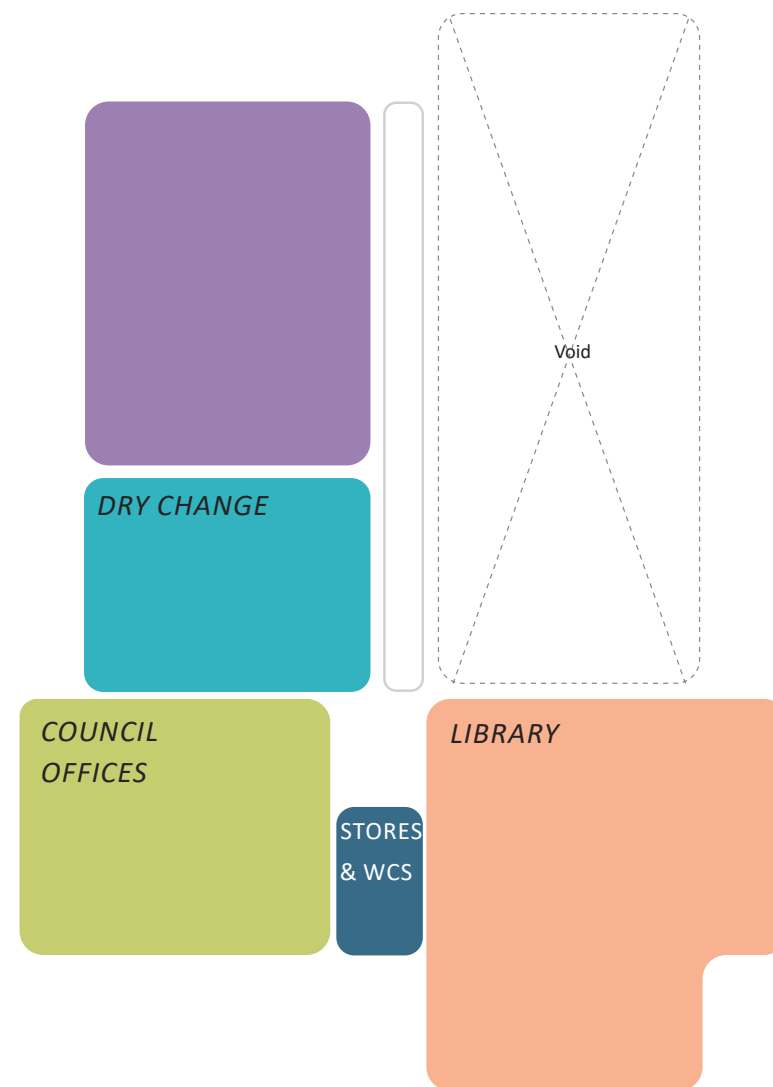
Key

➔ Main vehicular access route

Option 2 - Coloured Plans

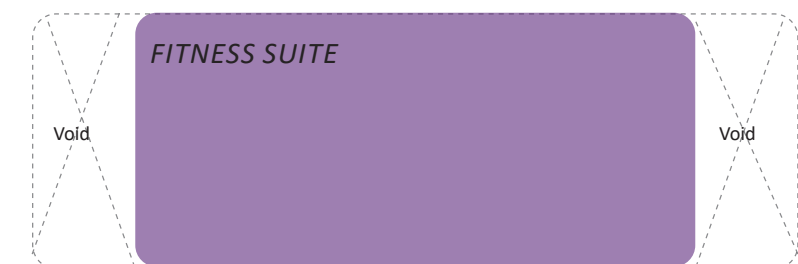


Ground Floor



First Floor

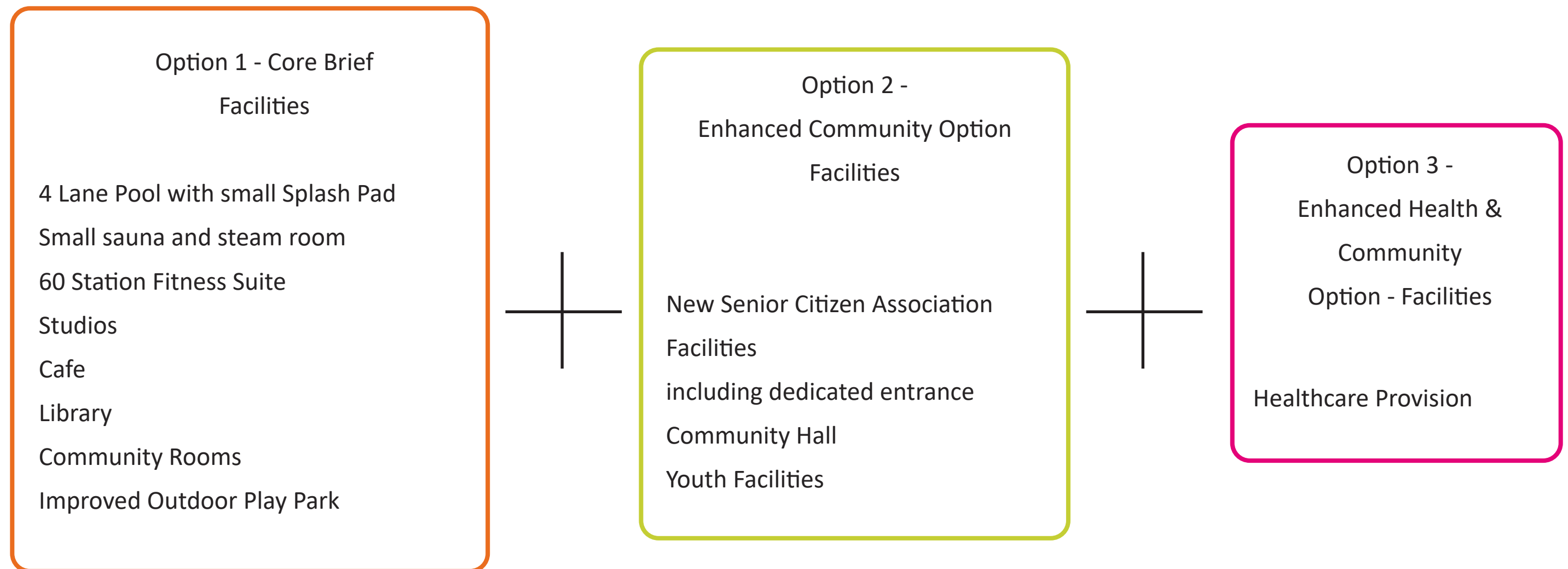
This option reinstates the Senior Citizens Association facilities within a refurbished Hollins House, connected to the hub via a new entrance link. There is also the opportunity for a dedicated Senior Citizen entrance into Hollins House



Mezzanine

Refurbished Hollins House could include new Senior Citizens Facilities, alongside community rooms, youth facilities and offices.

Option 3 - Enhanced Health & Community Brief



Option 3 - Location Plan

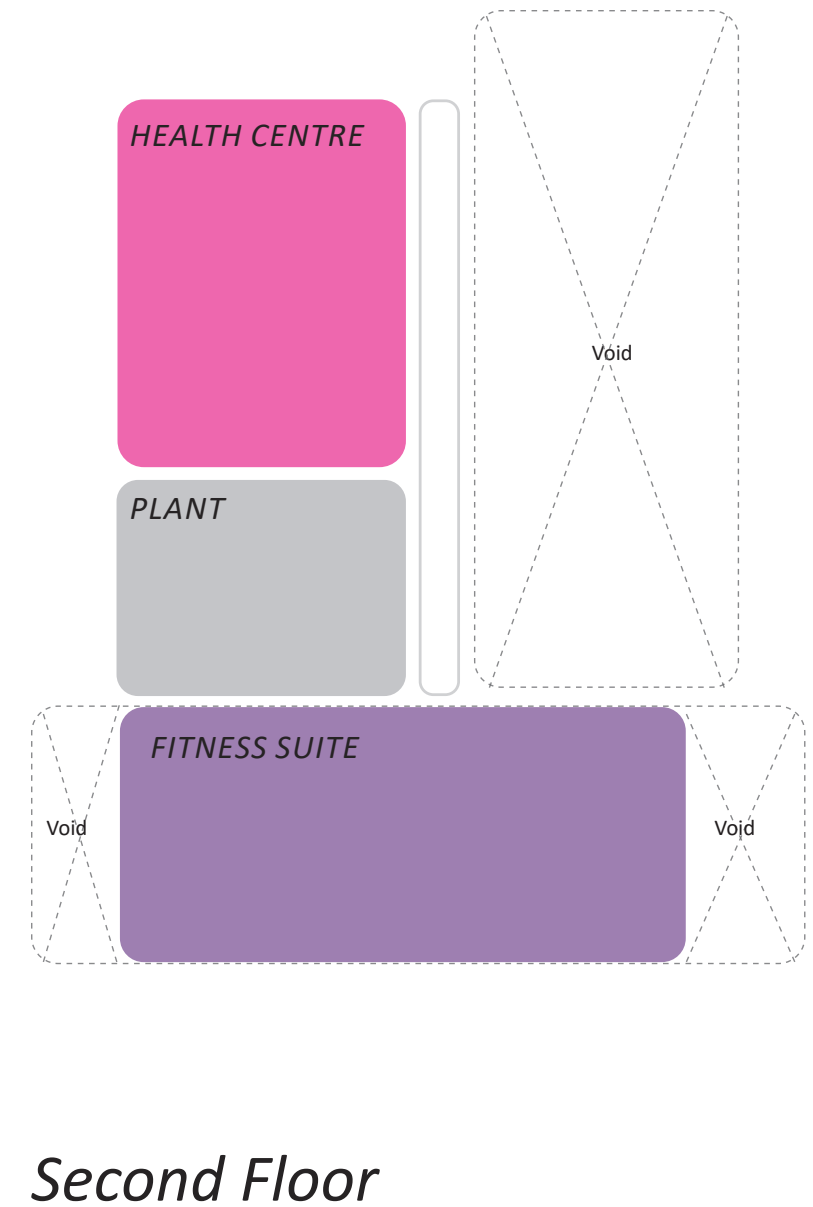
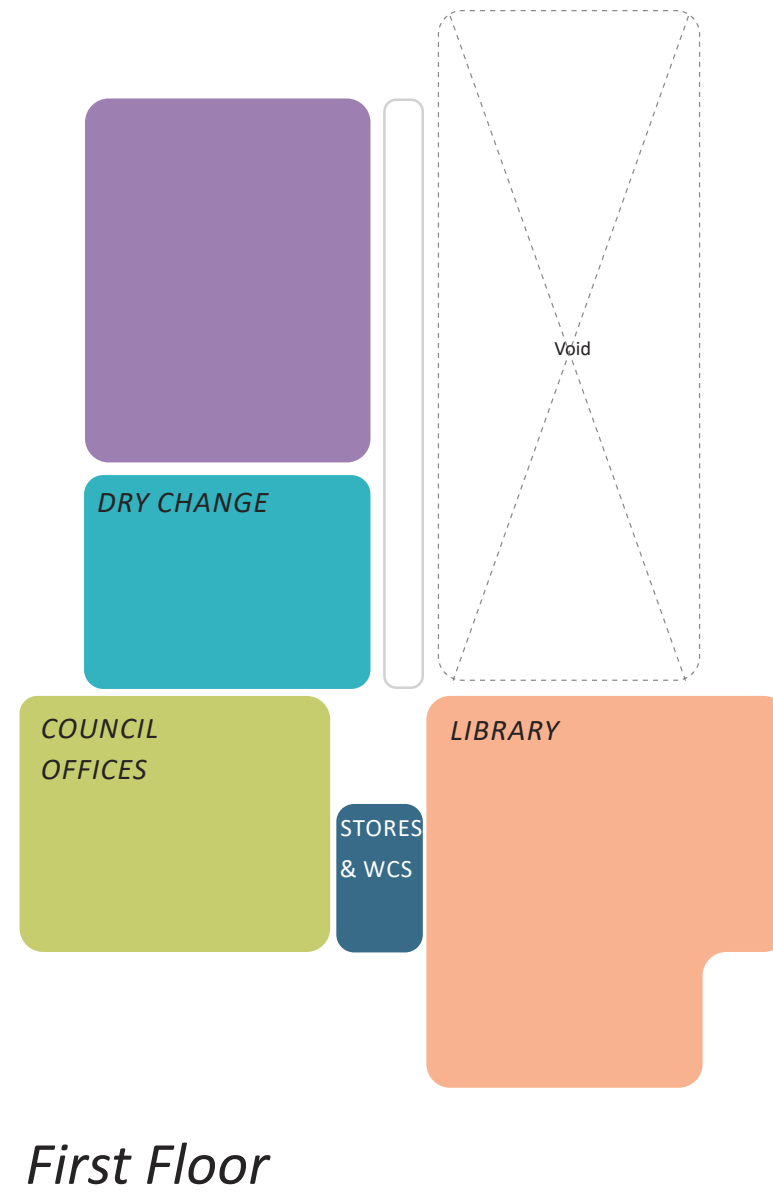
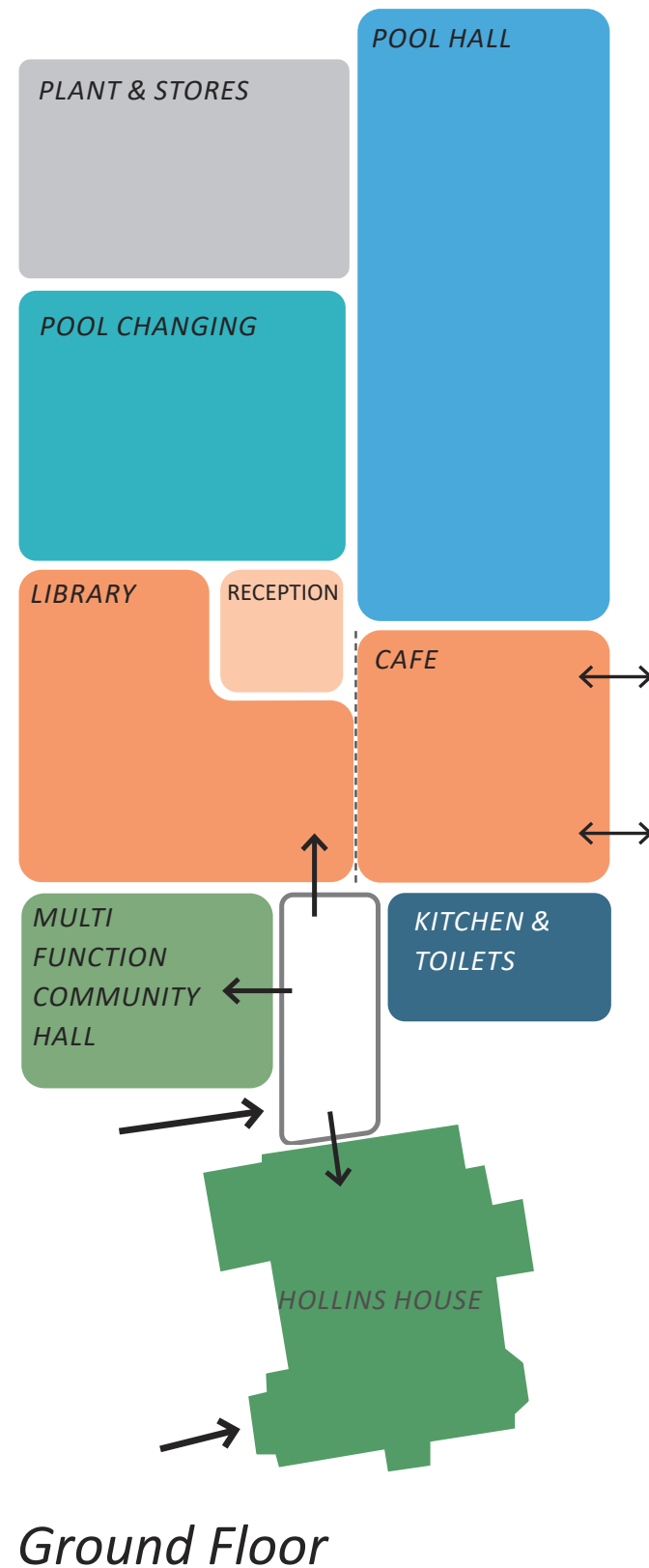
- Refurbished Hollins House as a community centre, housing the Senior Citizen Association lounge and community rooms
- Current Hollins House extension removed
- Health centre provided on second floor within new building
- Current health centre building removed
- Vehicular access to site via Parkfield Avenue
- Existing Senior Citizen Association building removed to allow for overspill car parking
- Entrance to park from high street pedestrianised



Key

➔ Main vehicular access route

Option 3 - Coloured Plans



This option re-provides the Senior Citizens Association facilities within a refurbished Hollins House, and also provides space for a new health centre within the Community Hub.



4 • Ways to Engage

Ways to Engage

Next Steps

Your feedback will be used to inform the further development of the designs. We are due to have more conversations with organisations such as the NHS, Senior Citizens Association, Scouts and the Police in order to finalise a preferred option. Subject to funding of the scheme being approved, we would then develop the plans in more detail, followed by a further invitation to give your views prior to a full planning application.

Your Feedback

We really value your feedback, and the comments and ideas we've had so far have been invaluable in getting us to this point. Please read the information contained on these boards and let us know what you think. Some points you may want to think about and comment on:

- What do you think of the spaces included in the hub, is there anything else you'd like to see or something you think shouldn't be there?
- What do you think about the site location?
- What do you think about the three options and do you have a preference?
- Any further comments or ideas?

The closing date for comments to be received is 4th January 2021



Please visit
www.stockport.gov.uk/haveyoursay to see this information online and submit your feedback



If you have a smart phone with a **QR Code** reader you can scan the icon above to access this information online



If you would like to send your comments by post please send to **Marple Pool Project c/o Stockport Museum, 30-31 Market Place, Stockport. SK1 3ES**



If you would like a hard copy of this information or require it in an alternative format, please call **0161 218 1881** (voicemail service)



Newcastle Studio

2nd Floor, TWO
Jesmond Three Sixty
Newcastle
NE2 1DB
t: 0191 281 7700

info@gt3architects.com

Nottingham Studio

The Wallis Building
Plumtre Place
Nottingham
NG1 1LW
t: 0115 947 0800

www.gt3architects.com