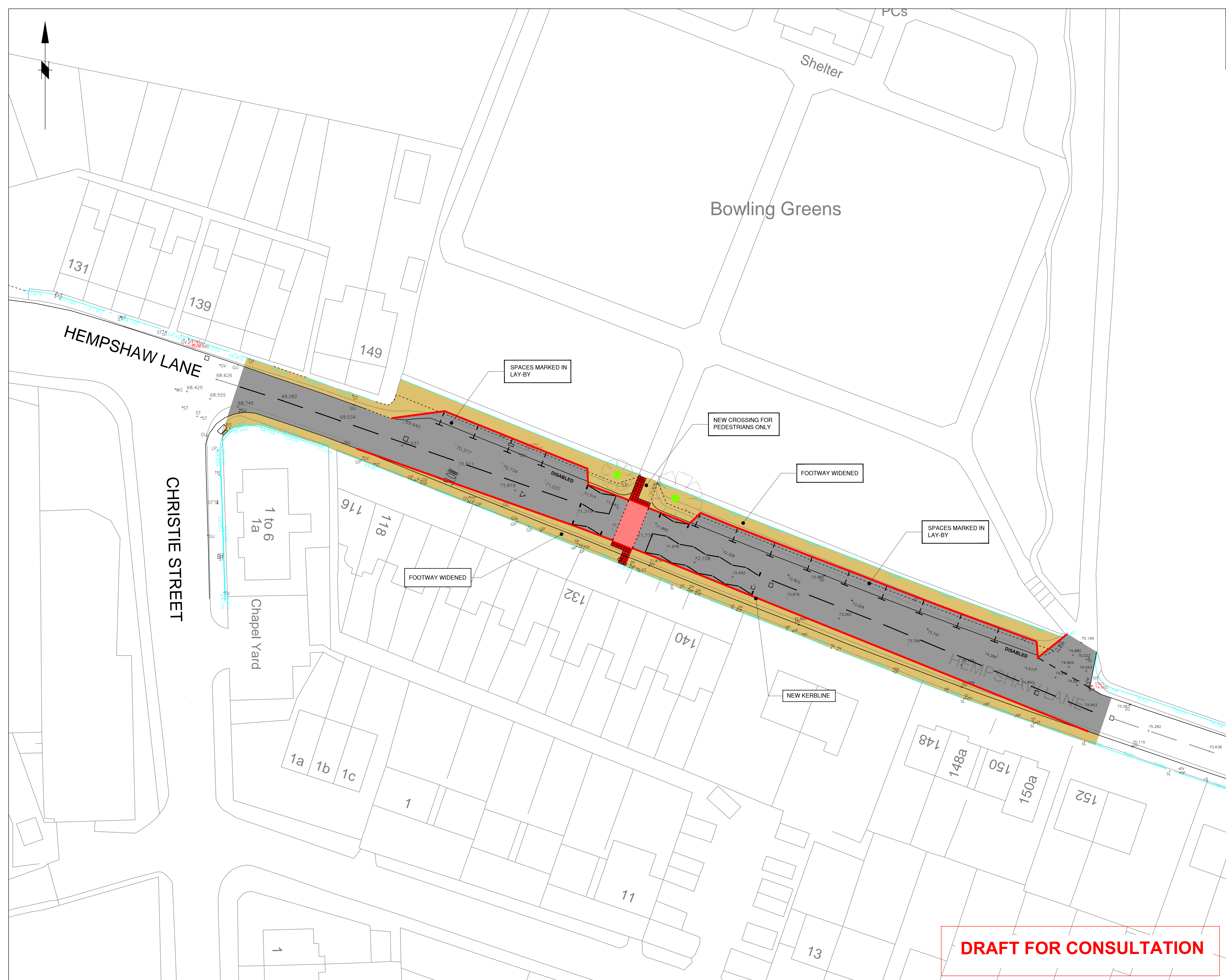


This map is reproduced from Ordnance Survey material with the permission of Ordnance Survey on behalf of the Controller of Her Majesty's Stationery Office © Crown copyright. Unauthorised reproduction infringes Crown copyright and may lead to prosecution or civil proceedings. Stockport Metropolitan Borough Council 100019571 2019

KEY:

- CARRIAGEWAY
- FOOTWAY
- CONTROLLED TACTILE PAVING
- PEDESTRIAN SIGNAL CROSSING
- PROPOSED NEW KERB
- TREE TO REMAIN



Rev.	Drawn	Checked	Date	Revision Details
AMENDMENTS				

STOCKPORT
METROPOLITAN BOROUGH COUNCIL
HIGHWAYS AND TRANSPORTATION
CAROLINE SIMPSON
CORPORATE DIRECTOR
PLACE
Job Title

**MAYORAL CHALLENGE FUND
OFFERTON TO STOCKPORT**

Drawing Title

**HEMPSHAW LANE
PUFFIN CROSSING**

Drawn	Engineer	Checked	Approved
CP	NDW	KF	NDW
Date	Date	Date	Date
04/07/19	04/07/19	26/09/19	26/09/19
Size	Scale		
A1	1:250		
Drawing No.			Revision
F / 0280 / 007 / 001			

DRAFT FOR CONSULTATION